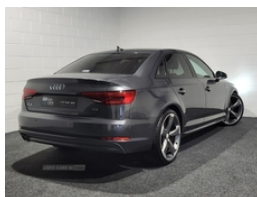


## Audi A4 2.0 TDI 190 S Line 4dr S Tronic | Oct 2016

NI REGISTERED

# £14,995



**Black Edition Styling**

**20" Ttrs Alloys**

**Privacy Glass**

**Indoor After Hours Viewing Available**

**Part Ex And Finance Also Available**

### Vehicle Features

2 USB ports, 3 point rear seatbelts x3, 3 zone climate control, ABS/EBD, Acoustic windscreen, Adaptive driver and front passenger airbags, Air inlets in titan black with two horizontal inlays in chrome, Audi drive select, Audi Pre sense collision avoidance, Audi smartphone interface, Auto boot lid opening, Auto dimming rear view mirror, Automatic headlights + automatic windscreen wipers, Aux input, Black cloth headlining, Body colour bumpers, Chrome door handles, Chrome rolled exhaust, DAB digital radio module, Electric adjustable heated door mirrors, Electric front windows, Electric rear windows, Electro-mechanical PAS, Electromechanical parking brake, ESP, First aid kit, Front/rear floor mats, Front centre armrest with 12v socket, Front head airbags, Front seatbelt pretensioners + load limiters, Front side airbags, Front sport seats, Gearshift paddles, Headlight range control, Illuminated door sill finishers, Isofix child seat preparation for front passenger/outer rear seats inc passenger airbag deactivation, Jack and tool kit, Keyless Start, LED daytime running lights, LED indicators in door mirrors, Locking wheel bolts, MMI radio plus with CD player, Multi-Collision braking, Perforated leather gearknob, Reach + rake adjustable steering column, Rear diffuser in Twilight grey matt, Rear headrests, Remote central locking, Roof spoiler, Seatbelt warning, Service interval indicator, S line exterior styling pack - A4 Saloon, Split folding rear seats, Stainless steel foot rest,

<b>Miles:</b>	75000
<b>Fuel Type:</b>	Diesel
<b>Transmission:</b>	Semi-Automatic
<b>Colour:</b>	Grey
<b>Engine Size:</b>	1968
<b>CO2 Emission:</b>	111
<b>Tax Band:</b>	C (£35 p/a)
<b>Body Style:</b>	Saloon
<b>Insurance group:</b>	26E
<b>Reg:</b>	YH66MPE

### Technical Specs

DIMENSIONS	
<b>Length:</b>	4726mm
<b>Width:</b>	1842mm
<b>Height:</b>	1427mm
<b>Seats:</b>	5
<b>Luggage Capacity (Seats Up):</b>	480L
<b>Gross Weight:</b>	2075KG
<b>Max. Loading Weight:</b>	595KG

PERFORMANCE & ECONOMY	
<b>Fuel Consum. (Urban Cold):</b>	57.6MPG
<b>Fuel Consum. (Extra Urban):</b>	74.3MPG
<b>Fuel Consum. (Combined):</b>	67.3MPG
<b>Fuel Tank Capacity:</b>	40L
<b>Number Of Gears:</b>	7 SPEED
<b>Top Speed:</b>	147MPH
<b>Acceleration 0-100 km/h:</b>	7.7s
<b>Engine Power BHP:</b>	187.7BHP

Stainless steel pedals, Stop/start button, Sunvisors with vanity mirrors, Thatcham category 1 alarm + immobiliser, Top tether anchor plate for isofix child seat, Traction control, Tyre pressure monitoring system, Voice control system, Warning triangle